

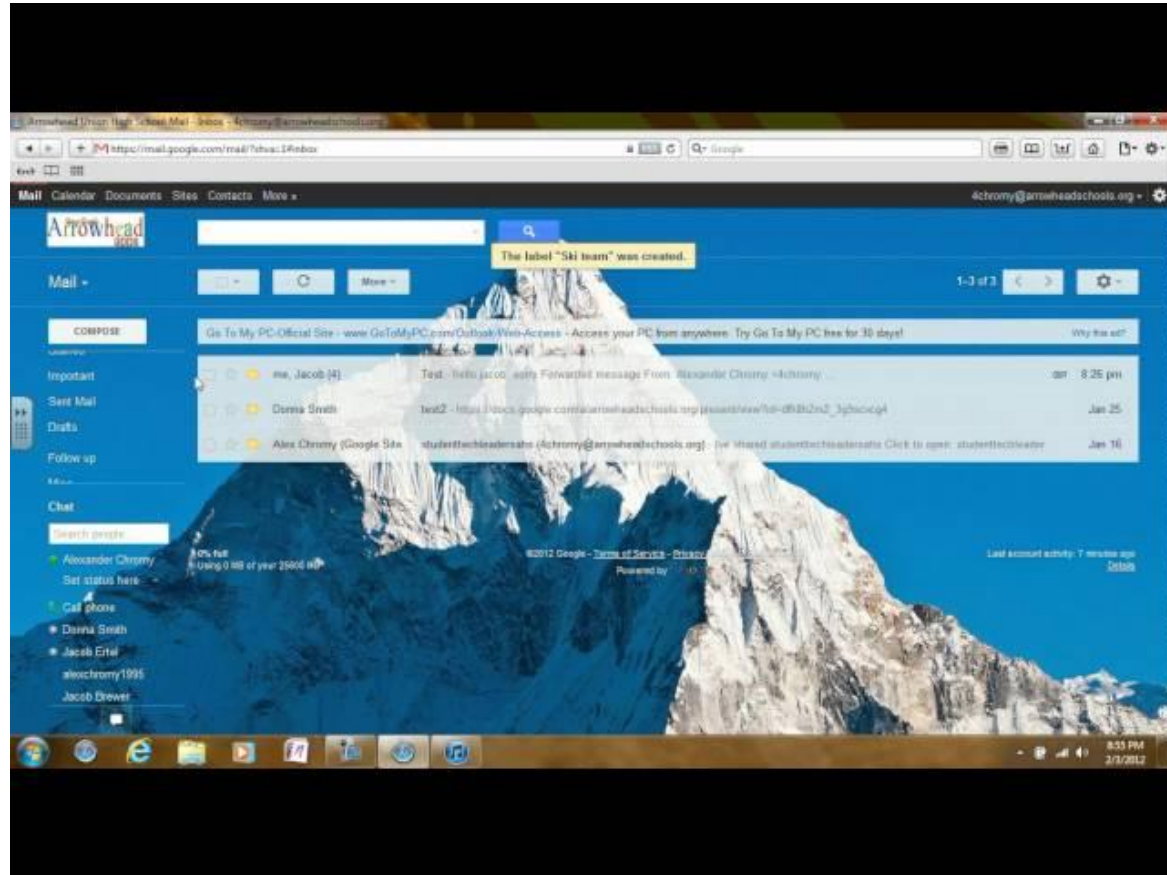
5 Minute PD

Google Resources

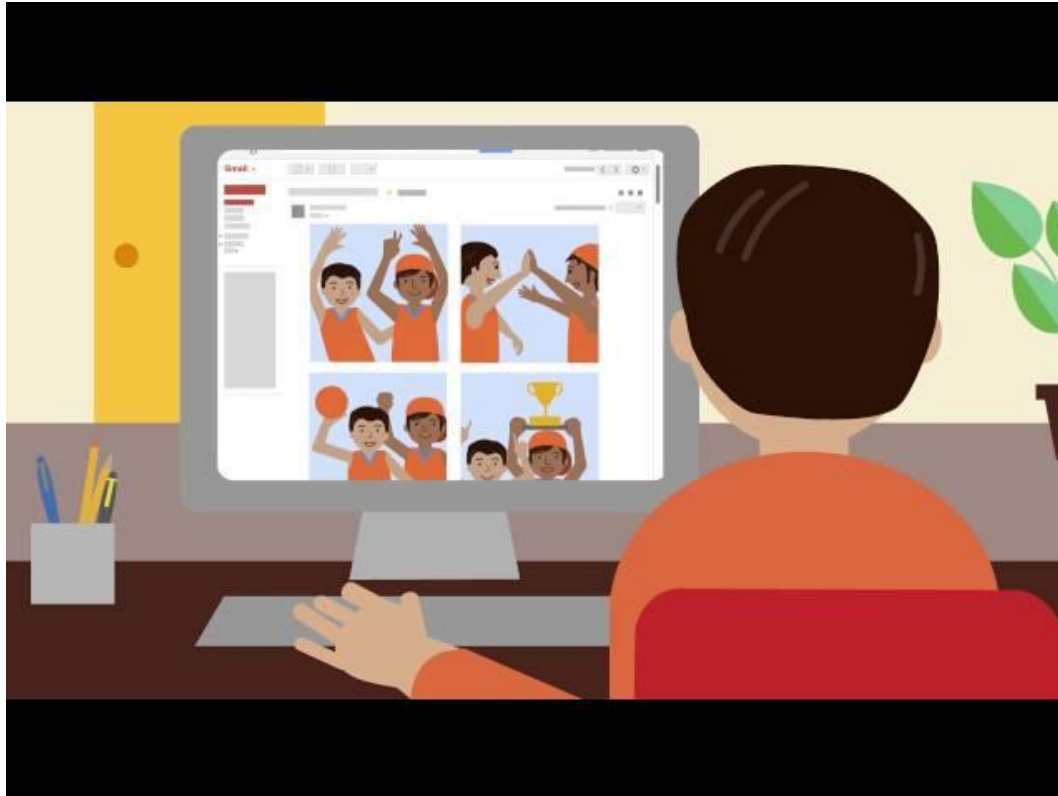
Tips and Tricks in Gmail

[15 Gmail Tips Every Teacher Should Know About ...](#)

Gmail - Creating a Label (Folder) and Moving an Email



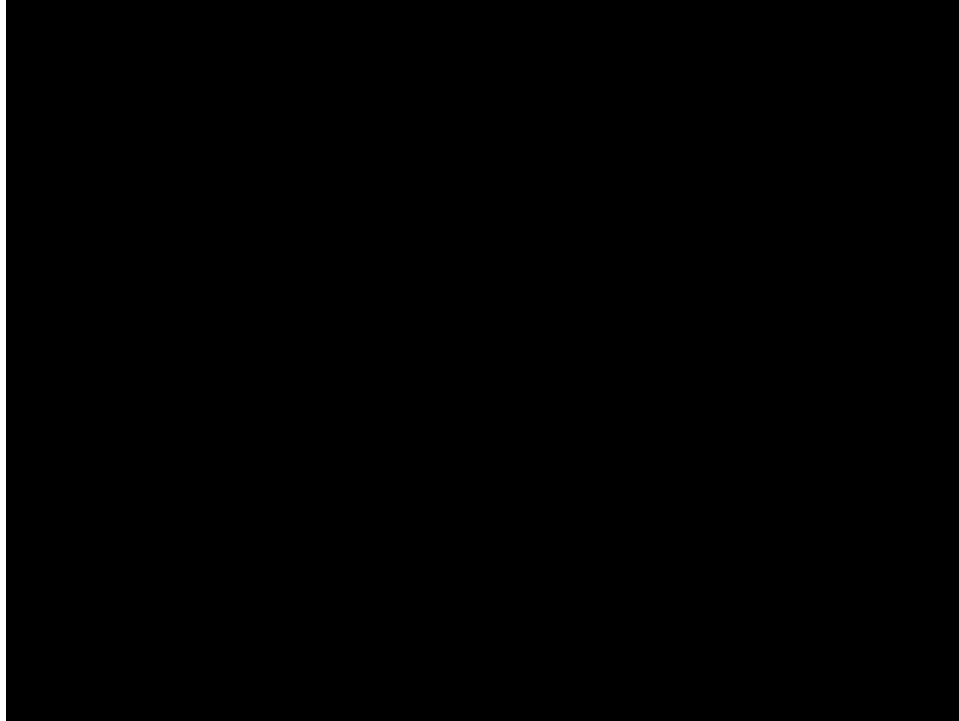
Using the Search Function in Gmail



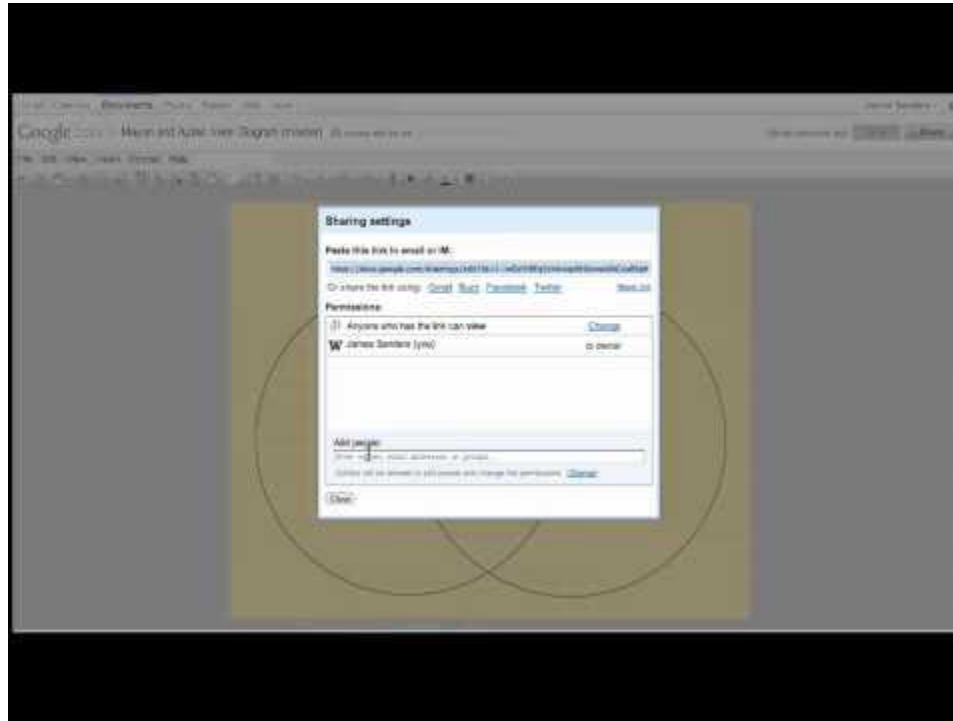
Creating Surveys/Assessments using Google Forms

The image shows a screenshot of the Google Forms editor interface. At the top, there is a toggle for 'Shuffle question order'. Below this, the form is titled 'Sample Assessment' and includes the instruction 'Complete the following items below'. The form contains two text input fields: 'Last Name*' and 'First Name*', both of which are currently redacted with black boxes. Below the name fields, there is a question configuration section. It includes a 'Question Title' field with the text 'Block?', a 'Help Text' field, and a 'Question Type' dropdown menu set to 'Multiple choice'. There is also a checkbox for 'Go to page based on answer'. Underneath, there are two radio button options: 'Block 1' and 'Click to add option', with a link to 'Add "Other"'. At the bottom of this section, there is an 'Advanced settings' link, a blue 'Done' button, and a checkbox for 'Required question'.

Adding Flubaroo to Google Sheets



Using Google Draw to Create Graphic Organizers



Creating Graphic Organizers using Google Drawings

[15 Google Drawing Graphic Organizers and How to Make Your Own](#)

Google Drive - Creating, Sharing, and Collaborating on a Document

